

Carbon Steel "Wafer" Ball Valves - PN16/ANSI 150

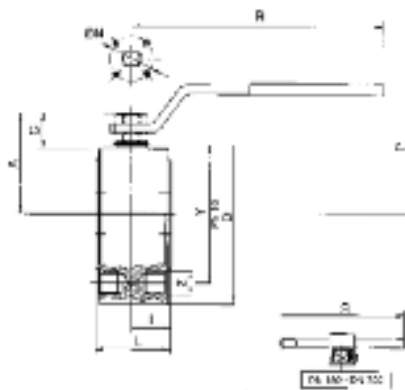
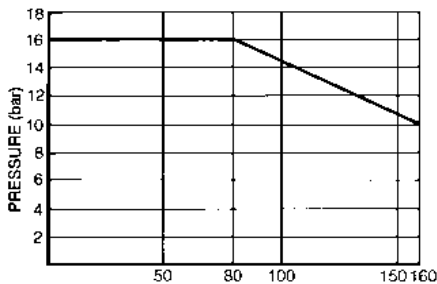
Connections: 1/2, 3/4, 1, 1 1/4, 1 1/2, 2, 2 1/2, 3, 4, 5, 6, 8

Available in sizes 15mm to 200mm, these valves are suitable for use in pipeline systems, where robust compact design essential. The basic material of construction is Carbon Steel. With Stainless Steel Ball, AISI304.

Certified antistatic and firesafe option available.

- Compact wafer design
- Full bore
- PN16 / ANSI 150 flanges
- Available anti-static/firesafe and ATEX

Part Number: **722000*** (PN16)
720009* (ANSI 150)



Technical Data

Media

Any application with media suitable to material of construction

Operating Pressure

PN16 / ANSI 150

Vacuum: Maximum 10⁻³ torr

Operating Temperature

-20°C to +160°C

Flow Rates

Flow rates stated in Kv: Flow coefficient in m³/h at differential pressure of 100kPa

Flanges

PN16 / ANSI 150 (PN40 on request)

Material

Body: Carbon Steel ASTM A105
Ball and Stem: AISI304 Stainless Steel
Main Seals: PTFE (glass filled and Carbon filled as options)
Stem Rings: FKM (Viton)

Actuation

90° rotation of lever

We recommend that the valve is used in either the fully open or fully closed position. In addition, the valve should be actuated at least twice a year

Additional Options

See 'Special executions page 049 - 050 for details'

720008 - PN40 flanged

720185 - Anti- static/Firesafe (ATEX) - PN16

720009 - ANSI 150 flanged

720233 - Anti- static/Firesafe (ATEX) - ANSI 150

Heating Jackets

Special Requests

For assistance, contact our technical office.

Dimensions (mm)		PN16 ANSI 150											PN16 ANSI 150			
Size	DN U Bore	D	Y	Y	I	L	R	P	A	C	N	Kv	PN	PN		
*04	1/2	15	15	90	65	61	19	35	131	65	47	15.5	32	16.3	16	20
*05	3/4	20	20	100	75	70	20	40	131	69	51.5	15.5	32	29.5	16	20
*06	1	25	25	110	85	80	24	46	174	80	61	19.5	42	43	16	20
*07	1 1/4	32	32	130	100	89	28	54	174	84	65.5	16.5	42	89	16	20
*08	1 1/2	40	38	140	110	99	31.75	63.5	250	102	78	24.5	50	230	16	20
*10	2	50	50	150	125	121	41	82	250	111	87	25	50	265	16	20
*12	2 1/2	65	64	175	145	140	51.5	103	321	128	104.5	28	70	540	16	20
*14	3	80	76	190	160	153	61	122	321	138	115	28.5	70	873	16	20
*18	4	100	95	220	180	191	76	152	381	156	137	34.5	102	1390	16	20
*19	5	125	125	250	210	216	98	196	381	178	159	34	102	1707	16	20
*20	6	150	150	300	240	242	116	232	700	266	201.5	51.5	125	2024	16	20
*21	8	200	200	340	295	298.5	158.5	400	700	332	288	68	125	2720	16	20